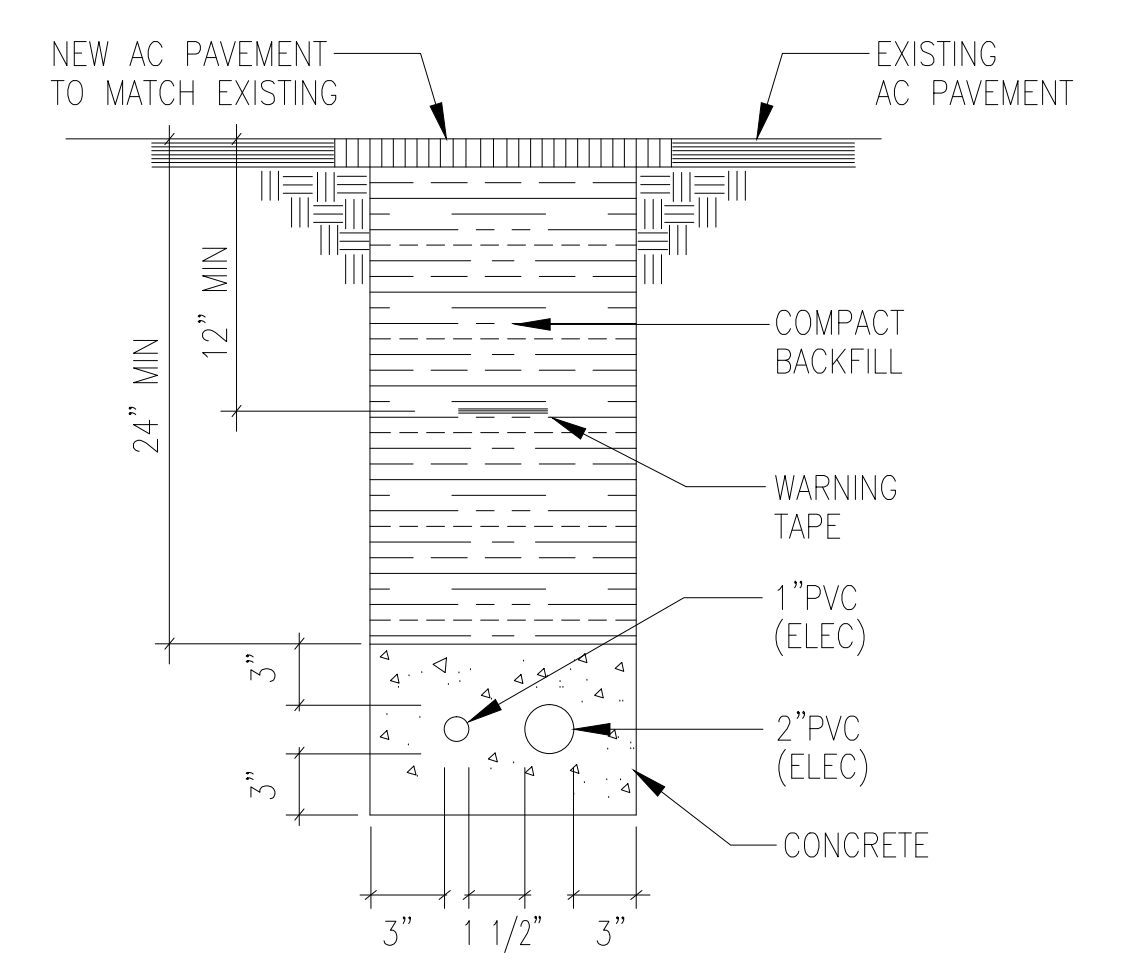


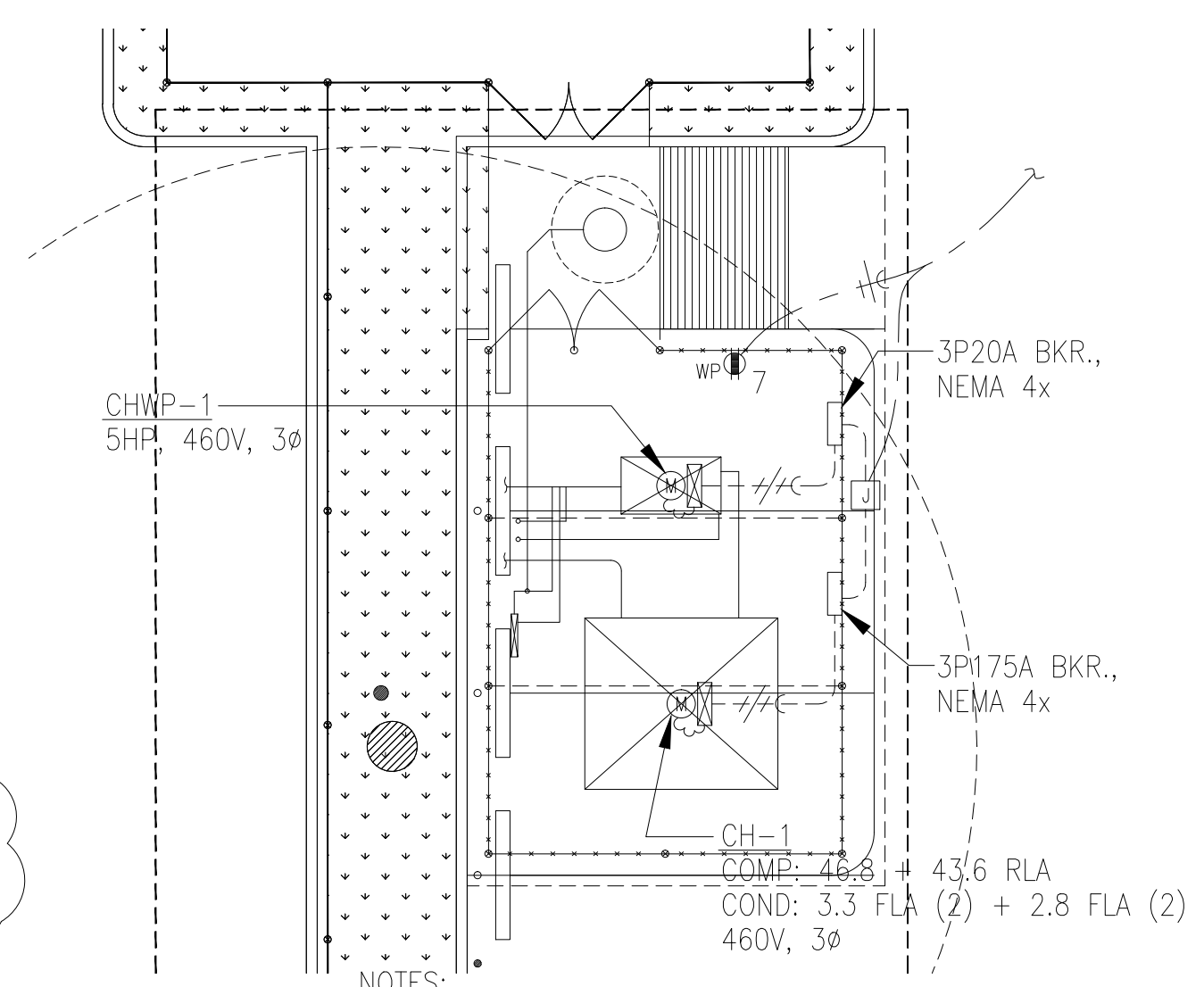
ELECTRICAL SYMBOLS

- EXISTING CEILING LUMINAIRE TO BE REMOVED
- EXISTING CEILING FLUORESCENT LUMINAIRE TO REMAIN
- EXISTING CEILING FLUORESCENT LUMINAIRE TO BE REMOVED
- EXISTING CEILING FLUORESCENT LUMINAIRE TO BE RELOCATED
- RELOCATED CEILING FLUORESCENT LUMINAIRE
- NEW CEILING FLUORESCENT LUMINAIRE
- NEW CEILING FLUORESCENT LUMINAIRE WITH EMERGENCY BATTERY PACK
- NEW WALL FLUORESCENT LUMINAIRE WITH EMERGENCY BATTERY PACK
- EXISTING EXIT LIGHT TO BE REMOVED
- NEW WALL EXIT LIGHT, DARKENED SEGMENT INDICATES ILLUMINATED SIDE
- NEW CEILING EXIT LIGHT, DARKENED SEGMENT INDICATES ILLUMINATED SIDE
- EXISTING SWITCH TO BE REMOVED
- NEW SWITCH, 1P20A, +4'-0"
- NEW SWITCH, 3W20A, +4'-0"
- DIMMER SWITCH, 1500W MINIMUM, +4'-0"
- EXISTING DUPLEX CONVENIENCE OUTLET TO REMAIN
- EXISTING DUPLEX CONVENIENCE OUTLET TO BE REMOVED
- NEW DUPLEX CONVENIENCE OUTLET, 3W20A, GROUNDING TYPE, +16" UNLESS OTHERWISE NOTED
- NEW DUPLEX CONVENIENCE OUTLET, 3W20A, GROUND FAULT INTERRUPTER TYPE, +16" UNLESS OTHERWISE NOTED
- NEW EQUIPMENT CONNECTION
- EXISTING EQUIPMENT CONNECTION TO BE REMOVED
- NEW WALL JUNCTION BOX, 4-11/16" SQUARE MINIMUM
- NEW CEILING JUNCTION BOX, 4-11/16" SQUARE MINIMUM
- EXISTING JUNCTION BOX
- NEW LARGE JUNCTION BOX
- NEW PANELBOARD
- EXISTING PANELBOARD
- NEW TRANSFORMER
- NEW TELEPHONE CABINET
- NEW TELEPHONE OUTLET, +16"
- EXISTING SPEAKER TO BE RELOCATED
- RELOCATED SPEAKER
- NEW DATA OUTLET, +16"
- NEW FIRE ALARM MANUAL STATION, +48"
- NEW FIRE ALARM AUDIBLE DEVICE/FLASHING LIGHT, +80"
- NEW FIRE ALARM FLASHING LIGHT, +80"
- EXISTING FIRE ALARM PANEL
- NEW FIRE ALARM PANEL
- NEW MOTOR OUTLET
- NEW MOTOR CONTROLLER
- NEW SAFETY SWITCH
- EXISTING SAFETY SWITCH TO BE REMOVED
- WEATHERPROOF
- LUMINAIRE DESIGNATION, TYPE "A-2/48" INDICATED
- WIRING IN EXISTING RACEWAY
- WIRING IN EXISTING RACEWAY TO BE REMOVED
- NEW WIRING IN EXPOSED RACEWAY
- NEW WIRING IN RACEWAY CONCEALED IN WALL OR CEILING
- NEW WIRING IN FLEXIBLE RACEWAY

- NOTES:**
1. ANY CIRCUIT WITH NO FURTHER DESIGNATION INDICATES A TWO WIRE CIRCUIT. CIRCUITS WITH ADDITIONAL WIRES ARE INDICATED AS FOLLOWS: ---/--- , 3 WIRES: ---/---/--- , 4 WIRES, ETC.
 2. GROUND WIRE PER NATIONAL ELECTRICAL CODE INDICATED AS FOLLOWS: ---G .
 3. ALL EXPOSED CONDUIT AND BOXES SHALL BE PAINTED TO MATCH ADJACENT WALL OR CEILING SURROUNDING.



DUCT SECTION
NOT TO SCALE



ENLARGED ELECTRICAL PLAN
SCALE: 1/8" = 1'-0"

EXIST. FCU TO BE REMOVED AND REPLACED WITH NEW. RE-CONNECT TO EXIST. CKT. REMOVAL AND REPLACEMENT OF ALL EXISTING FCU'S AND AHU'S ARE TO BE CONSIDERED ADDITIVE ALTERNATE #1. PHASING OF THIS WORK SHALL BE COORDINATED WITH THE GENERAL AND MECHANICAL CONTRACTOR. (TYPICAL)

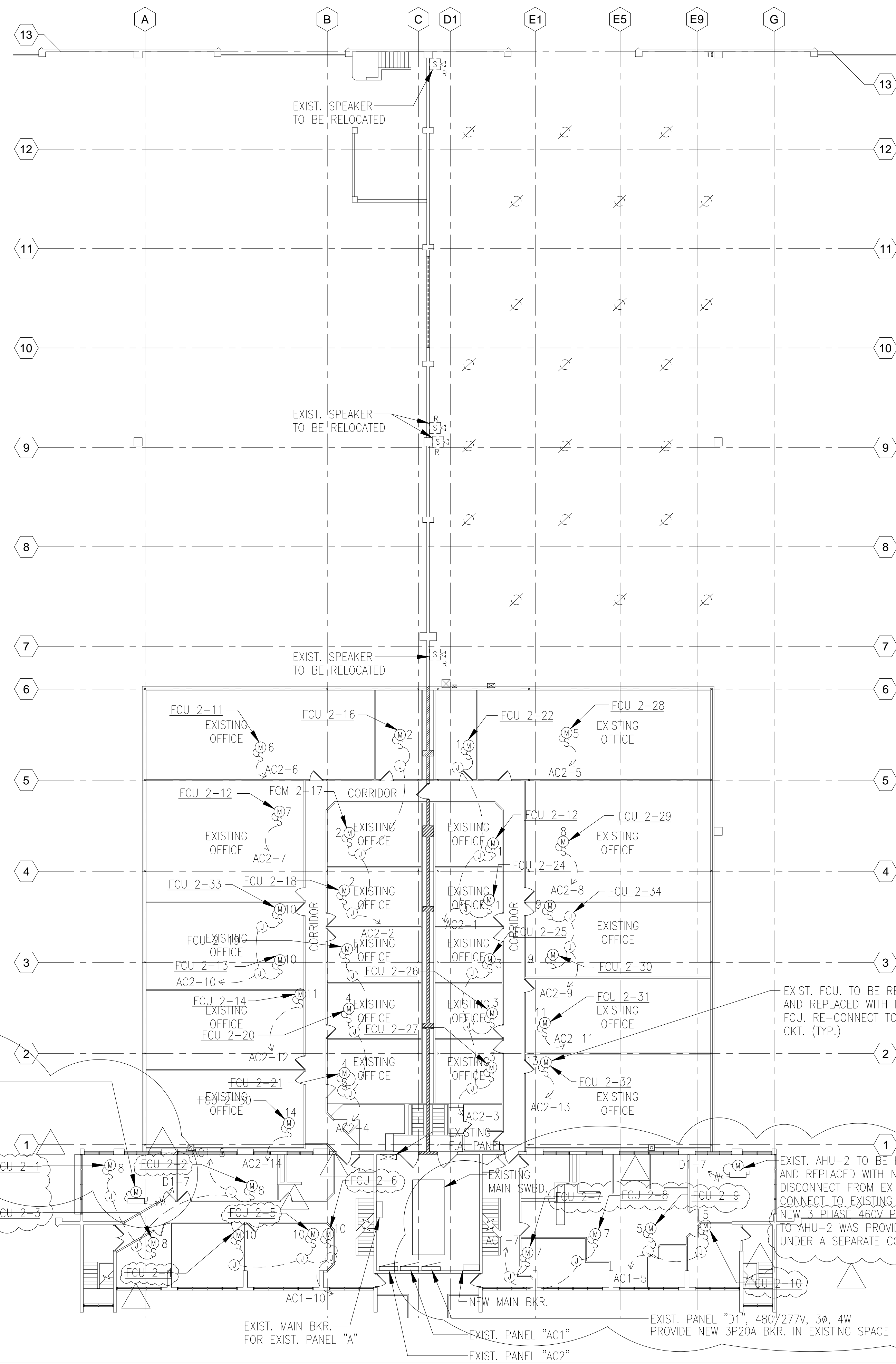
SAWCUT AND PATCH ALL EXIST. A/C PAVEMENT AND CONCRETE SIDEWALKS TO INSTALL ALL NEW CONDUITS. NEW CONDUITS TO BE CONC. ENCASED AND BURIED +24" BELOW GRADE.

SEE ENLARGED ELECTRICAL PLAN ON THIS SHEET

E1 GROUND FLOOR ELECTRICAL SITE PLAN

SCALE
1/16" = 1'-0"

AS-BUILT DRAWING		8/2/05
REVISION NO.	SYMBOL	DESCRIPTION
DEPARTMENT OF BUSINESS, ECONOMIC DEVELOPMENT AND TOURISM STATE OF HAWAII PIER 2 WAREHOUSE AND OFFICE IMPROVEMENTS AT FOREIGN TRADE ZONE NO. 9 HONOLULU, OAHU, HAWAII GROUND FLOOR ELECTRICAL SITE PLAN, ELECTRICAL SYMBOLS, DUCT SECTION		
LOU CHAN & ASSOCIATES, INC.		PROJECT NO.: FTZ001
DESIGNED BY: JY	CHECKED BY: JY	DATE: OCT 2003
DRAWN BY: EB	APPROVED BY: JY	
LICENSE EXPIRATION DATE: APR 30, 2006		SHEET E1.01 OF 67 SHEETS



DEMOLITION NOTES

- EXISTING PLANS DO NOT INDICATE COMPLETE EXISTING WIRING CONDITIONS. CONTRACTOR SHALL VERIFY EXISTING CONDITIONS PRIOR TO START OF WORK.
- BEFORE ANY WIRING IS CUT, CONTRACTOR SHALL VERIFY USAGE OF WIRING TO BE CUT TO ASSURE THAT SERVICES REQUIRED ARE NOT DISCONTINUED. PROVIDE ADDITIONAL WIRING DEVICES AND OTHER ACCESSORIES TO ENSURE CONTINUITY OF SERVICE TO OTHER PARTS OF INSTALLATION TO REMAIN.
- REMOVE ALL EXISTING WIRING NOT TO REMAIN IN SERVICE.
- REMOVE ALL CONDUITS NO LONGER REQUIRED.
- PHASE WORK TO ASSURE CONTINUITY OF ELECTRICAL, TELEPHONE AND SIGNAL SERVICES TO PARTS OF FACILITIES THAT WILL REMAIN IN USE.
- REMOVE ALL EXISTING LIGHTING FIXTURES, RECEPTACLES AND SWITCHES INDICATED TO BE REMOVED OR NO LONGER REQUIRED. BLANK OUTLETS AND PLUG ALL HOLES IN BOXES AND CABINETS.
- DELIVER ALL SALVAGEABLE MATERIAL AS DETERMINED BY ENGINEER AT NO ADDITIONAL COST TO STATE. PACK MATERIAL IN BOXES. COIL ALL CABLES AND TIE.
- RETURN ALL REMOVED LIGHT FIXTURES TO STATE. DELIVER ITEMS AND STACK IN LOCATION AS DETERMINED BY ENGINEER.

GENERAL NOTES:

- REMOVAL AND REPLACEMENT OF ALL EXISTING FCU'S AND AHU'S ARE TO BE CONSIDERED ADDITIVE ALTERNATIVE #1. PHASING OF THIS WORK SHALL BE COORDINATED WITH THE GENERAL AND MECHANICAL CONTRACTOR.

EXIST. AHU-1 TO BE REMOVED AND REPLACED WITH NEW. DISCONNECT FROM EXISTING CKT AND CONNECT TO EXISTING PANEL "D1" NEW 3 PHASE 460V POWER TO AHU-1 WAS PROVIDED UNDER A SEPARATE CONTRACT.

EXIST. AHU-2 TO BE REMOVED AND REPLACED WITH NEW. DISCONNECT FROM EXISTING CKT AND CONNECT TO EXISTING PANEL "D1" NEW 3 PHASE 460V POWER TO AHU-2 WAS PROVIDED UNDER A SEPARATE CONTRACT.

NOTE: REPLACEMENT OF EXISTING FCU 2-1 THROUGH 2-10 HAS BEEN DELETED FROM CONTRACTUAL WORK SCOPE.

AS-BUILT DRAWING		8/2/05
REVISION NO.	SYMBOL	DESCRIPTION
		DEPARTMENT OF BUSINESS, ECONOMIC DEVELOPMENT AND TOURISM STATE OF HAWAII PIER 2 WAREHOUSE AND OFFICE IMPROVEMENTS AT FOREIGN TRADE ZONE NO. 9 HONOLULU, OAHU, HAWAII MEZZANINE FLOOR ELECTRICAL SITE PLAN, DEMOLITION NOTES, GENERAL NOTES
LOU CHAN & ASSOCIATES, INC.		PROJECT NO.: FTZ001
DESIGNED BY: JY	CHECKED BY: JY	DATE: OCT 2003
DRAWN BY: EB	APPROVED BY: JY	
THIS WORK WAS PREPARED BY ME OR UNDER MY SUPERVISION. LICENSE EXPIRATION DATE: APR 30, 2006		SHEET E1.02 OF 67 SHEETS

E1 MEZZANINE FLOOR ELECTRICAL SITE PLAN

SCALE
1/16" = 1'-0"

10

9

8

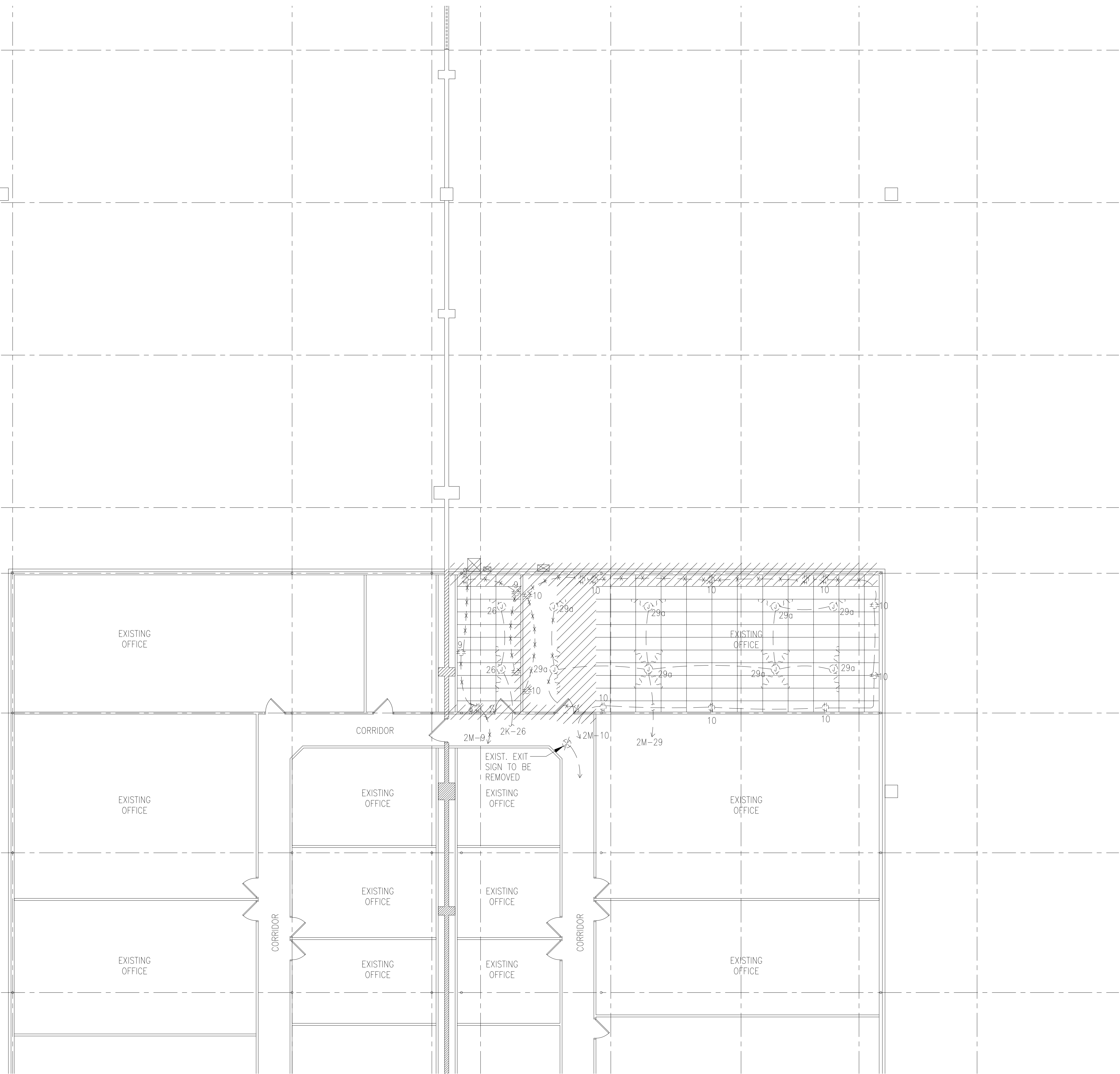
7

6

5

4

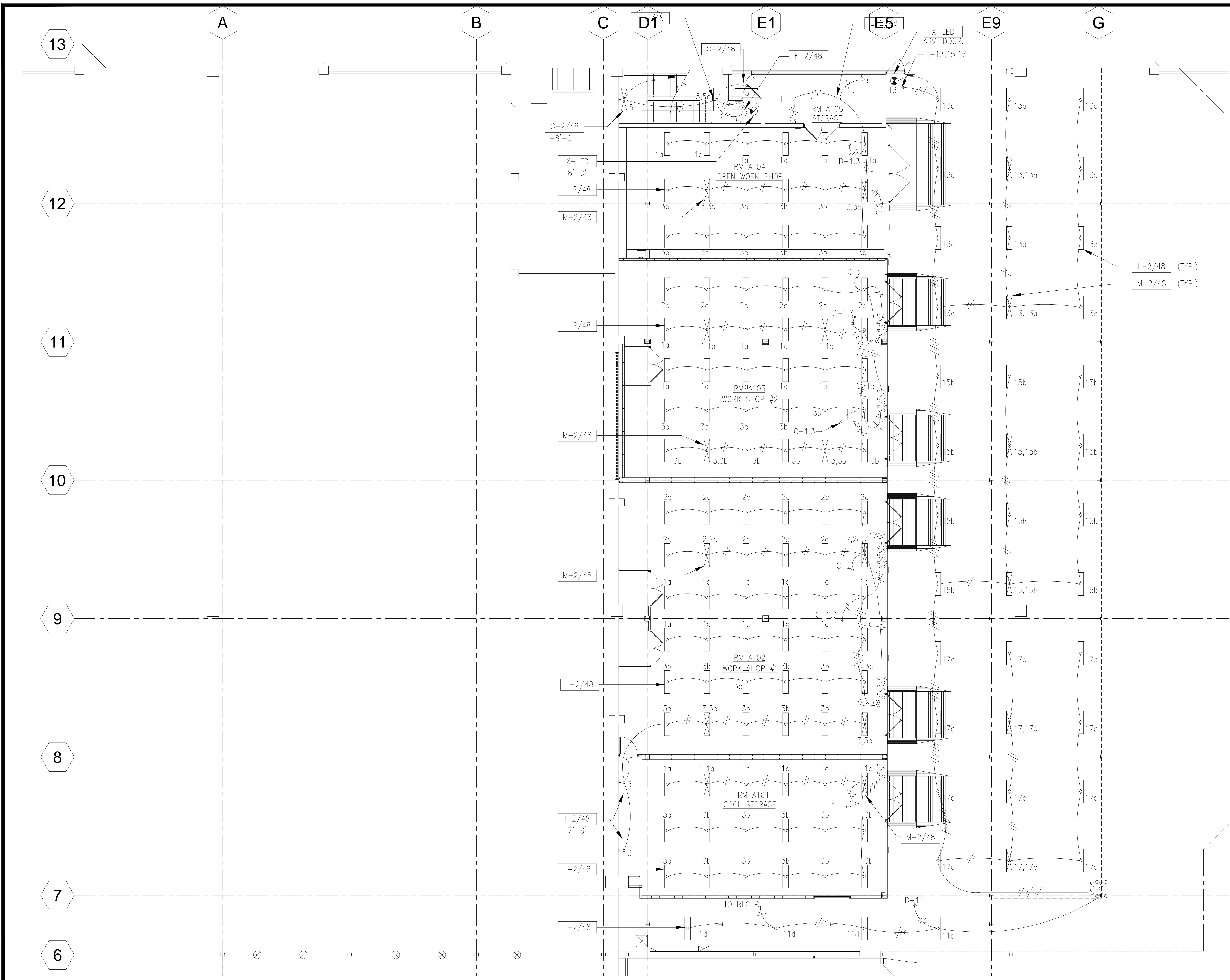
3



E1 PARTIAL MEZZANINE FLOOR ELECTRICAL DEMOLITION PLAN

SCALE
1/8" = 1'-0"

REVISION NO.	SYMBOL	DESCRIPTION	SHT. OF	DATE
		DEPARTMENT OF BUSINESS, ECONOMIC DEVELOPMENT AND TOURISM STATE OF HAWAII PIER 2 WAREHOUSE AND OFFICE IMPROVEMENTS AT FOREIGN TRADE ZONE NO. 9 HONOLULU, OAHU, HAWAII PARTIAL MEZZANINE FLOOR ELECTRICAL DEMOLITION PLAN		
LOU CHAN & ASSOCIATES, INC.		PROJECT NO.:	SHEET	
DESIGNED BY: JY		CHECKED BY:	E1.03	
DRAWN BY: EB		APPROVED BY:	DATE:	
LICENSE EXPIRATION DATE: APR. 30, 2006		JY	OCT 2003	
		JY	58 OF 67 SHEETS	



E1 PARTIAL GROUND FLOOR LIGHTING PLAN - NEW WORK

SCALE
1/8" = 1'-0"

REVISION NO.	SYMBOL	DESCRIPTION	SHT. OF	DATE

THIS WORK WAS PREPARED BY ME OR UNDER MY SUPERVISION.

LICENSE EXPIRATION DATE: APR 30, 2006

DEPARTMENT OF BUSINESS,
ECONOMIC DEVELOPMENT AND TOURISM
STATE OF HAWAII

PIER 2 WAREHOUSE AND OFFICE IMPROVEMENTS
AT FOREIGN TRADE ZONE NO. 9
HONOLULU, OAHU, HAWAII

PARTIAL GROUND FLOOR LIGHTING PLAN - NEW WORK

PROJECT NO.: FTZ001

SHEET **E1.04**

DESIGNED BY: JY	CHECKED BY: JY	DATE: OCT 2003
DRAWN BY: EB	APPROVED BY: JY	DATE: OCT 2003

OF _____ SHEETS



AS-BUILT DRAWING		8/2/05
REVISION NO.	SYMBOL	DESCRIPTION
		SHT. OF
		DATE
DEPARTMENT OF BUSINESS, ECONOMIC DEVELOPMENT AND TOURISM STATE OF HAWAII PIER 2 WAREHOUSE AND OFFICE IMPROVEMENTS AT FOREIGN TRADE ZONE NO. 9 HONOLULU, OAHU, HAWAII PARTIAL GROUND FLOOR POWER AND SIGNAL PLAN - NEW WORK		
LOU CHAN & ASSOCIATES, INC.		PROJECT NO.: FTZ001
DESIGNED BY: JY		SHEET E1.05
CHECKED BY: JY		DATE: OCT 2003
DRAWN BY: EB		APPROVED BY: JY
LICENSE EXPIRATION DATE: APR 30, 2006		

E1 PARTIAL GROUND FLOOR POWER AND SIGNAL PLAN - NEW WORK

SCALE
1/8" = 1'-0"

10

9

8

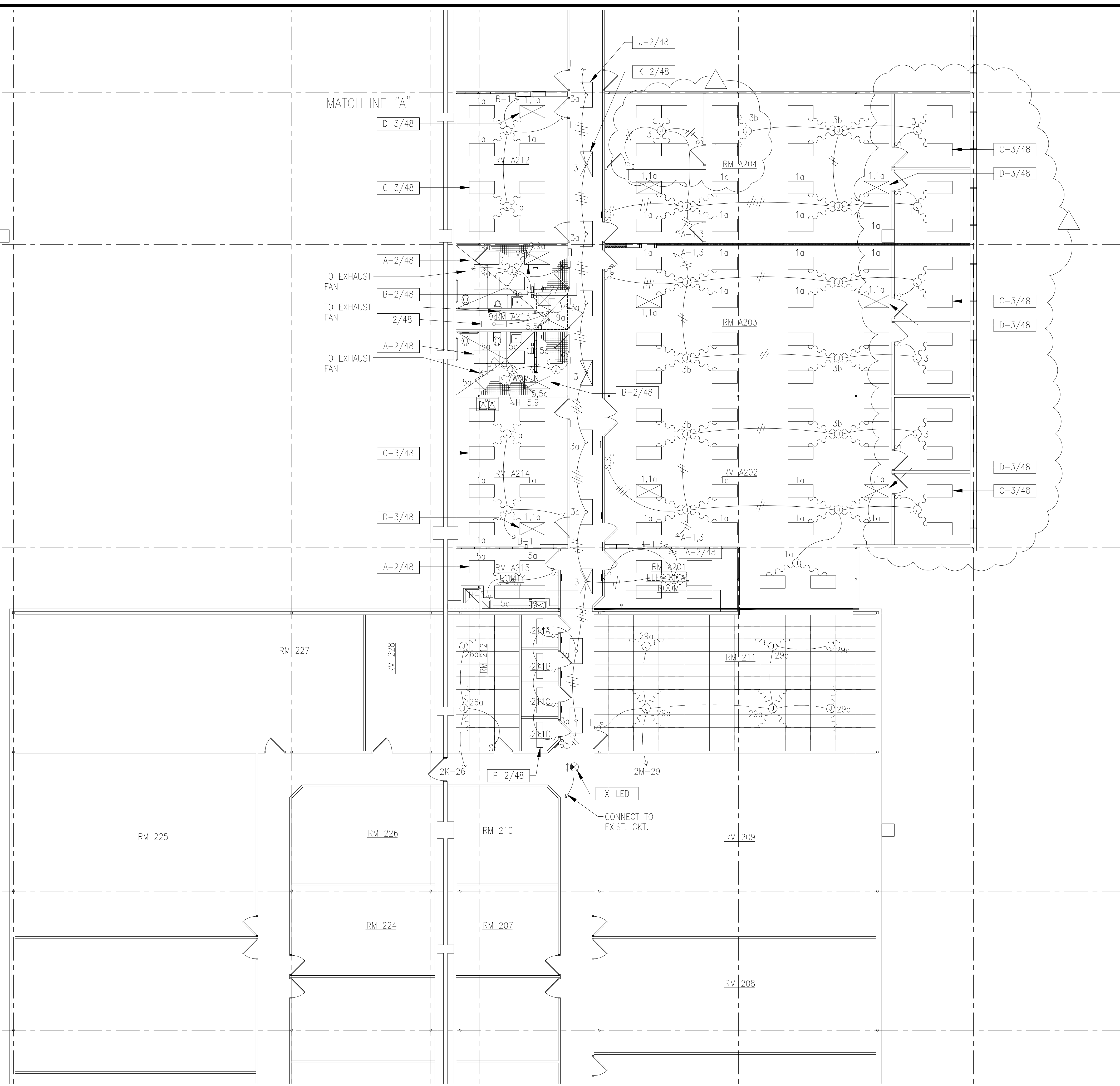
7

6

5

4

3



E1 PARTIAL MEZZANINE LIGHTING PLAN - NEW WORK

SCALE
1/8" = 1'-0"

AS-BUILT DRAWING		8/2/05
REVISION NO.	SYMBOL	DESCRIPTION
		SHT. _____ OF _____
		DATE
DEPARTMENT OF BUSINESS, ECONOMIC DEVELOPMENT AND TOURISM STATE OF HAWAII PIER 2 WAREHOUSE AND OFFICE IMPROVEMENTS AT FOREIGN TRADE ZONE NO. 9 HONOLULU, OAHU, HAWAII		
PARTIAL MEZZANINE LIGHTING PLAN - NEW WORK		
LOU CHAN & ASSOCIATES, INC.		PROJECT NO.: FTZ001
DESIGNED BY: JY		CHECKED BY: JY
DRAWN BY: EB		DATE: OCT 2003
APPROVED BY: JY		SHEET E1.06
<small>LICENSE EXPIRATION DATE: APR 30, 2006</small>		



E1 PARTIAL MEZZANINE LIGHTING PLAN - NEW WORK

SCALE
1/8" = 1'-0"

REVISION NO.	SYMBOL	DESCRIPTION	SHT. OF	DATE

THIS WORK WAS PREPARED BY ME OR UNDER MY SUPERVISION.

DEPARTMENT OF BUSINESS,
ECONOMIC DEVELOPMENT AND TOURISM
STATE OF HAWAII

PIER 2 WAREHOUSE AND OFFICE IMPROVEMENTS
AT FOREIGN TRADE ZONE NO. 9
HONOLULU, OAHU, HAWAII

PARTIAL MEZZANINE LIGHTING PLAN - NEW WORK

PROJECT NO.: FTZ001

SHEET **E1.07**

DESIGNED BY: JY	CHECKED BY: JY	DATE: OCT 2003
DRAWN BY: EB	APPROVED BY: JY	62 OF 67 SHEETS

LICENSE EXPIRATION DATE: APR 30, 2006

10

9

8

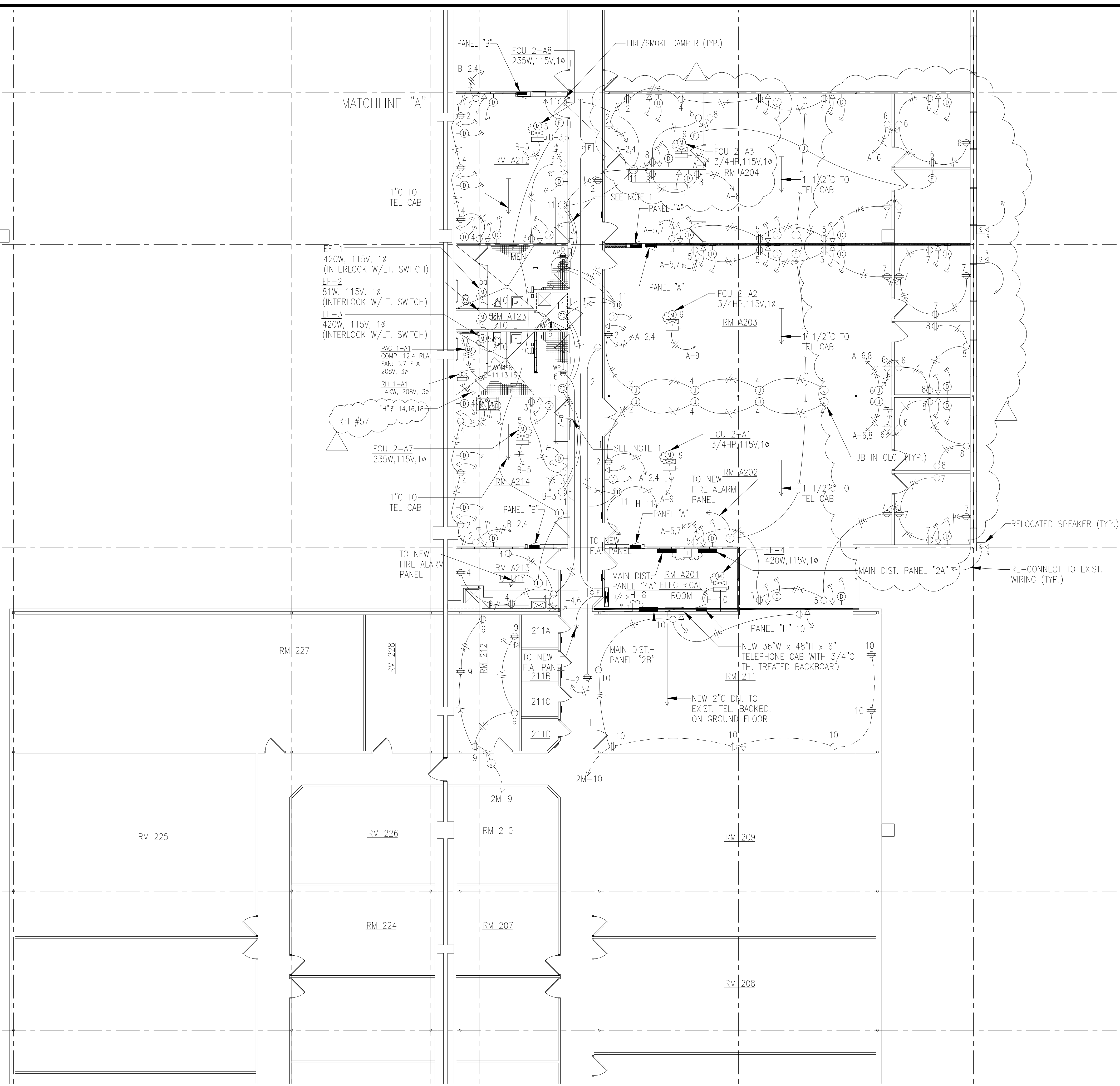
7

6

5

4

3



NOTES
 1. CONTRACTOR SHALL ENSURE NO CONDUITS, JUNCTION BOXES AND/OR EQUIPMENT IS INSTALLED IN THIS 7'-0" AREA TO ACCOMMODATE FUTURE DOOR.

AS-BUILT DRAWING		8/2/05
REVISION NO.	SYMBOL	DESCRIPTION
		DEPARTMENT OF BUSINESS, ECONOMIC DEVELOPMENT AND TOURISM STATE OF HAWAII PIER 2 WAREHOUSE AND OFFICE IMPROVEMENTS AT FOREIGN TRADE ZONE NO. 9 HONOLULU, OAHU, HAWAII PARTIAL MEZZANINE POWER AND SIGNAL PLAN - NEW WORK
LOU CHAN & ASSOCIATES, INC.		PROJECT NO.: FTZ001 SHEET: E1.08
DESIGNED BY: JY	CHECKED BY: JY	DATE: OCT 2003
DRAWN BY: EB	APPROVED BY: JY	DATE: OCT 2003
LICENSE EXPIRATION DATE: APR 30, 2006		OF _____ SHEETS

E1 PARTIAL MEZZANINE POWER AND SIGNAL PLAN - NEW WORK

SCALE
 1/8" = 1'-0"



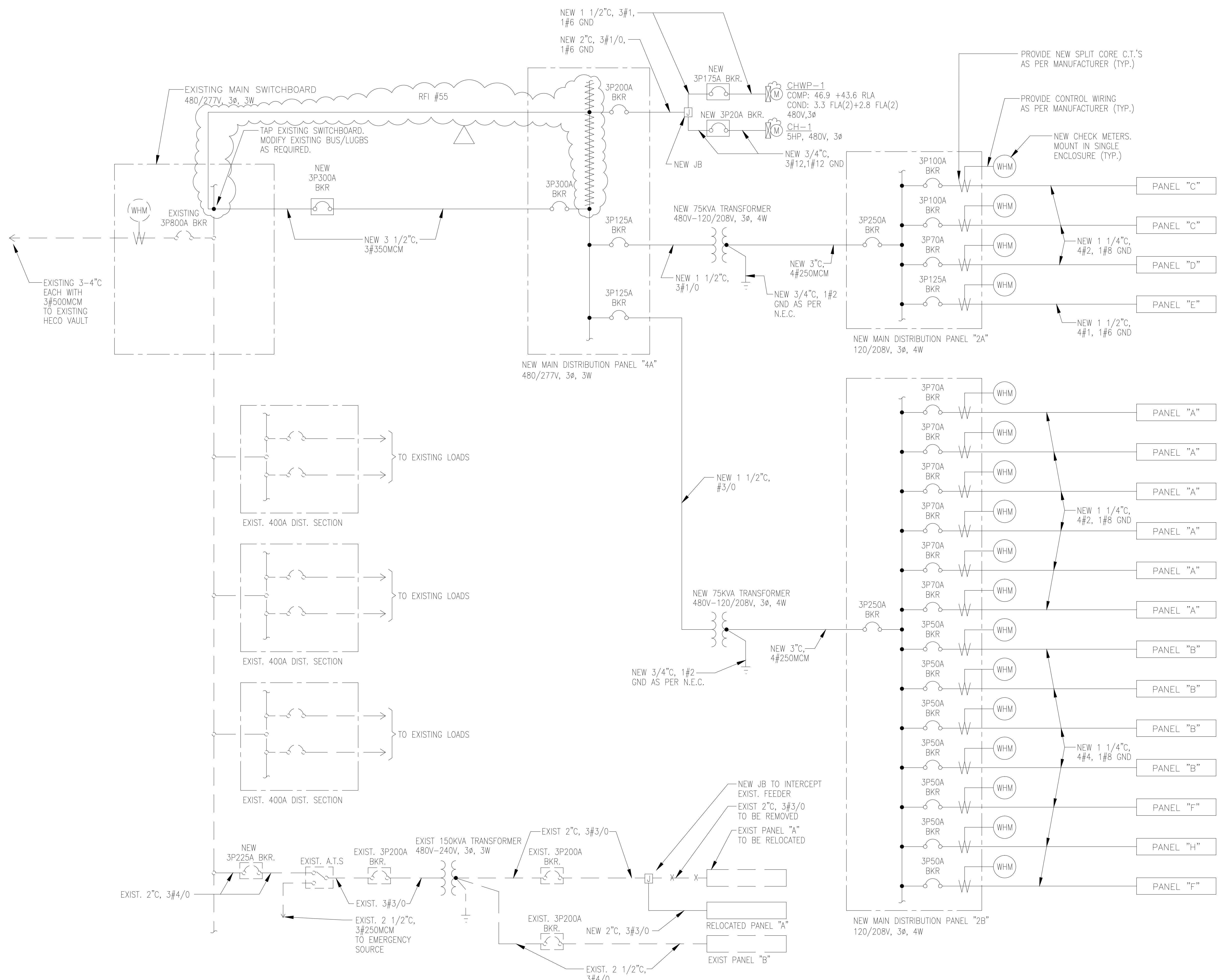
NOTES
 1. CONTRACTOR SHALL ENSURE NO CONDUITS, JUNCTION BOXES AND/OR EQUIPMENT IS INSTALLED IN THIS 7'-0" AREA TO ACCOMMODATE FUTURE DOOR.

REVISION NO.	SYMBOL	DESCRIPTION	SHT. OF	DATE

		DEPARTMENT OF BUSINESS, ECONOMIC DEVELOPMENT AND TOURISM STATE OF HAWAII	
		PIER 2 WAREHOUSE AND OFFICE IMPROVEMENTS AT FOREIGN TRADE ZONE NO. 9 HONOLULU, OAHU, HAWAII	
PARTIAL MEZZANINE POWER AND SIGNAL PLAN - NEW WORK		PROJECT NO.: FTZ001	SHEET E1.09
DESIGNED BY: JY	CHECKED BY: JY	DATE: OCT 2003	64 OF 87 SHEETS
DRAWN BY: EB	APPROVED BY: JY	LICENSE EXPIRATION DATE: APR 30, 2006	

E1 PARTIAL MEZZANINE POWER AND SIGNAL PLAN - NEW WORK

SCALE
 1/8" = 1'-0"



SINGLE LINE DIAGRAM

AS-BUILT DRAWING		8/2/05
REVISION NO.	SYMBOL	DATE
DEPARTMENT OF BUSINESS, ECONOMIC DEVELOPMENT AND TOURISM STATE OF HAWAII		
PIER 2 WAREHOUSE AND OFFICE IMPROVEMENTS AT FOREIGN TRADE ZONE NO. 9 HONOLULU, OAHU, HAWAII		
SINGLE LINE DIAGRAM		
LOU CHAN & ASSOCIATES, INC.		PROJECT NO.: FTZ001
DESIGNED BY: JY		CHECKED BY: JY
DRAWN BY: EB		APPROVED BY: JY
DATE: OCT 2003		SHEET: E1.10
LICENSE EXPIRATION DATE: APR 30, 2006		65 OF 87 SHEETS

PANEL "A"		120/208 VOLTS		3 ϕ , 4WSN		
3P70A MAIN BKR		BRANCH BKR I.C.		10,000 AMPS		
FLUSH, 20" WIDE CABINET, INDUSTRIAL-BOLTED						
CKT NO.	BKR	L O A D	KVA			WIRE
			A	B	C	
1	1P20A	LIGHTS	1.0			12
2		RECEP	1.0			
3		LIGHTS		1.0		
4		RECEP		1.0		
5					1.0	
6				1.0		
7			1.0			
8			1.0			
9	1P30A*	FCU		1.7		10
10	1P20A	SPARE				
11						
12						
13	1P	P F B				
14						
15						
16						
17						
18						
19						
20						
21						
22						
23						
24						
* - PROVIDE 1P20A BKR. FOR FCU IN RM. A207						
T O T A L			4.2	3.9	2.2	

PANEL "B"		120/208 VOLTS		3 ϕ , 4WSN		
3P50A MAIN BKR		BRANCH BKR I.C.		10,000 AMPS		
FLUSH, 20" WIDE CABINET, INDUSTRIAL-BOLTED						
CKT NO.	BKR	L O A D	KVA			WIRE
			A	B	C	
1	1P20A	LIGHTS	1.0			12
2		RECEP	1.0			
3				1.0		
4				1.0		
5		SPARE			1.0	
6					1.0	12
7						
8						
9						
10						
11						
12						
13	1P	P F B				
14						
15						
16						
17						
18						
19						
20						
21						
22						
23						
24						
T O T A L			2.0	2.0	1.0	

PANEL "C"		120/208 VOLTS		3 ϕ , 4WSN		
3P100A MAIN BKR		BRANCH BKR I.C.		10,000 AMPS		
FLUSH, 20" WIDE CABINET, INDUSTRIAL-BOLTED						
CKT NO.	BKR	L O A D	KVA			WIRE
			A	B	C	
1	1P20A	LIGHTS	1.2			12
2			0.6			
3				1.2		
4		RECEP		1.0		
5					1.0	
6					1.0	
7			1.0			
8			1.0			
9				1.0		
10				1.0		
11					1.0	
12					1.0	
13			1.0			
14			1.0			
15				1.0		
16				1.0		
17		FCU 1-A3			1.3	
18		RECEP			1.0	
19		FCU 1-A1	1.1			
20		SPARE				
21		FCU 1-A2		1.1		12
22		SPARE				
23		SPARE				
24		SPARE				
25	1P	P F B				
26						
27						
28						
29						
30						
T O T A L			6.9	7.3	6.3	

PANEL "H"		120/208 VOLTS		3 ϕ , 4WSN		
3P50A MAIN BKR		BRANCH BKR I.C.		10,000 AMPS		
SURFACE, 20" WIDE CABINET, INDUSTRIAL-BOLTED						
CKT NO.	BKR	L O A D	KVA			WIRE
			A	B	C	
1	1P20A	LIGHTS	0.8			12
2		RECEP	1.0			
3		LIGHTS		1.4		
4		RECEP		1.0		
5		LIGHTS			0.8	
6		RECEP			1.0	
7		RECEP	1.0			10
8		FIRE ALARM PANEL	1.0			12
9		LIGHTS		0.9		12
10		EF-4		0.5		12
11		FIRE/SMOKE DAMPER			1.0	12
12		FIRE/SMOKE DAMPER			1.0	12
13		SPARE				
14						
15						
16						
17						
18						
19	1P	P F B				
20						
21						
22						
23						
24						
T O T A L			3.8	3.8	3.8	

PANEL "D"		120/208 VOLTS		3 ϕ , 4WSN		
3P70A MAIN BKR		BRANCH BKR I.C.		10,000 AMPS		
SURFACE, 20" WIDE CABINET, INDUSTRIAL-BOLTED						
CKT NO.	BKR	L O A D	KVA			WIRE
			A	B	C	
1	1P20A	LIGHTS	0.8			12
2		RECEP	1.0			
3		LIGHTS		1.2		
4		RECEP		1.0		
5					1.0	
6					1.0	
7			1.0			
8			1.0			
9				1.0		
10				1.0		
11		LIGHTS			0.4	10
12		JB FOR ALARM			0.2	12
13		LIGHTS	1.6			10
14		SEP-1	1.2			12
15		LIGHTS		1.6		10
16		SPARE				
17		LIGHTS			1.6	10
18		SPARE				
19	1P	P F B				
20						
21						
22						
23						
24						
T O T A L			6.6	5.8	5.1	

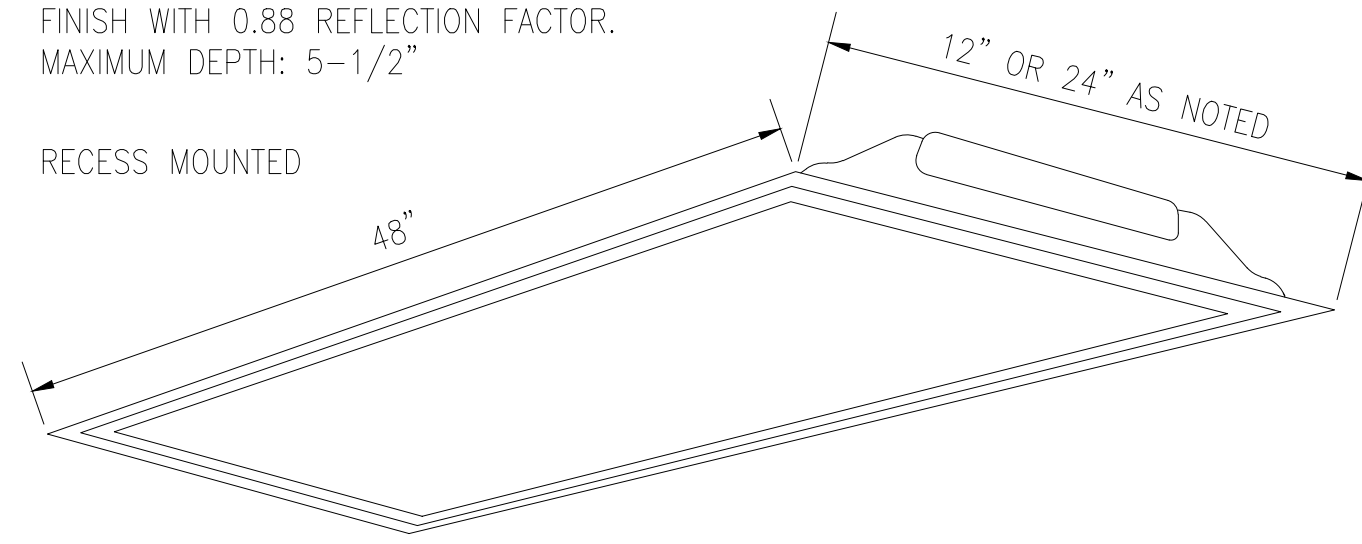
PANEL "E"		120/208 VOLTS		3 ϕ , 4WSN		
3P125A MAIN BKR		BRANCH BKR I.C.		10,000 AMPS		
FLUSH, 20" WIDE CABINET, INDUSTRIAL-BOLTED						
CKT NO.	BKR	L O A D	KVA			WIRE
			A	B	C	
1	1P20A	LIGHTS	0.6			12
2		RECEP	1.0			
3		LIGHTS		1.2		
4		RECEP		1.0		
5					1.0	
6					1.0	
7			1.0			
8			1.0			
9				1.0		
10				1.0		
11,13,15	3P40A	PAC 1-A1	2.2	2.2	2.2	10
12	1P20A	RECEP			1.0	12
14,16,18	3P50A	RH 1-A1	4.7	4.7	4.7	6
17	1P20A	SPARE				
19	1P20A	SPARE				
20						
21						
22						
23						
24						
25	1P	P F B				
26						
27						
28						
29						
30						
T O T A L			10.5	10.1	9.9	

PANEL "F"		120/208 VOLTS		3 ϕ , 4WSN		
3P50A MAIN BKR		BRANCH BKR I.C.		10,000 AMPS		
FLUSH, 20" WIDE CABINET, INDUSTRIAL-BOLTED						
CKT NO.	BKR	L O A D	KVA			WIRE
			A	B	C	
1	1P20A	LIGHTS	0.6			12
2		LIGHTS - RM 208	0.4			12
3		RECEP		1.0		12
4		FCU		0.3		12
5		RECEP			1.0	12
6		SPARE				
7						
8						
9						
10						
11						
12						
13	1P	P F B				
14						
15						
16						
17						
18						
T O T A L			1.0	1.3	1.0	

REVISION NO.	SYMBOL	DESCRIPTION	SHT. OF	DATE
DEPARTMENT OF BUSINESS, ECONOMIC DEVELOPMENT AND TOURISM STATE OF HAWAII PIER 2 WAREHOUSE AND OFFICE IMPROVEMENTS AT FOREIGN TRADE ZONE NO. 9 HONOLULU, OAHU, HAWAII				
PANEL SCHEDULES				
DESIGNED BY: JY		CHECKED BY: JY		DATE: OCT 2003
DRAWN BY: EB		APPROVED BY: JY		PROJECT NO.: FTZ001
				SHEET E1.11
LICENSE EXPIRATION DATE: APR 30, 2006				

ONE PIECE DIE FORMED AND EMBOSSED 22 GAUGE CRS WITH BAKED WHITE ENAMEL FINISH WITH 0.88 REFLECTION FACTOR. MAXIMUM DEPTH: 5-1/2"

RECESS MOUNTED



120 VOLT, ELECTRONIC BALLAST

0.125" THICK, PATTERN K-12 ONE PIECE ACRYLIC LENS

HINGED EXTRUDED ALUMINUM DOOR FRAME

VERIFY CEILING TYPES FOR RECESSED LIGHT FIXTURES AND PROVIDE PROPER FRAMES AND ACCESSORIES.

UNPAINTED PARTS - ZINC PLATED OR STAINLESS STEEL. CUT EDGES OF METAL TO BE PRIMED AND PAINTED SIMILAR TO BODY PAINTING.

BODY TO BE EMBOSSED TOP AND ENDS TO ASSURE RIGIDITY. CORNERS TO BE FOLDED AND WRAPPED TO ELIMINATE OPEN SEAMS

ALL ELECTRICAL COMPONENTS TO BE EASILY ACCESSIBLE WITHOUT REMOVAL OF TROFFER FROM CEILING. BALLAST TO BE BOLTED TO CHASSIS WITH BOLTS AND SELF-LOCKING NUTS

PROVIDE GASKETS TO PREVENT LIGHT LEAKS

LUMINAIRE TYPE "A" - 2/48 (24"W) 2-32W FLUORESCENT LAMPS

LUMINAIRE TYPE "B" - SIMILAR TO TYPE "A" EXCEPT WITH EMERGENCY BATTERY PACK

LUMINAIRE TYPE "C" - 3/48 (24"W) 3-32W FLUORESCENT LAMPS

LUMINAIRE TYPE "D" - SIMILAR TO TYPE "C" EXCEPT WITH EMERGENCY BATTERY PACK

LUMINAIRE TYPE "E" - 2/48 (12"W) 2-32W FLUORESCENT LAMPS

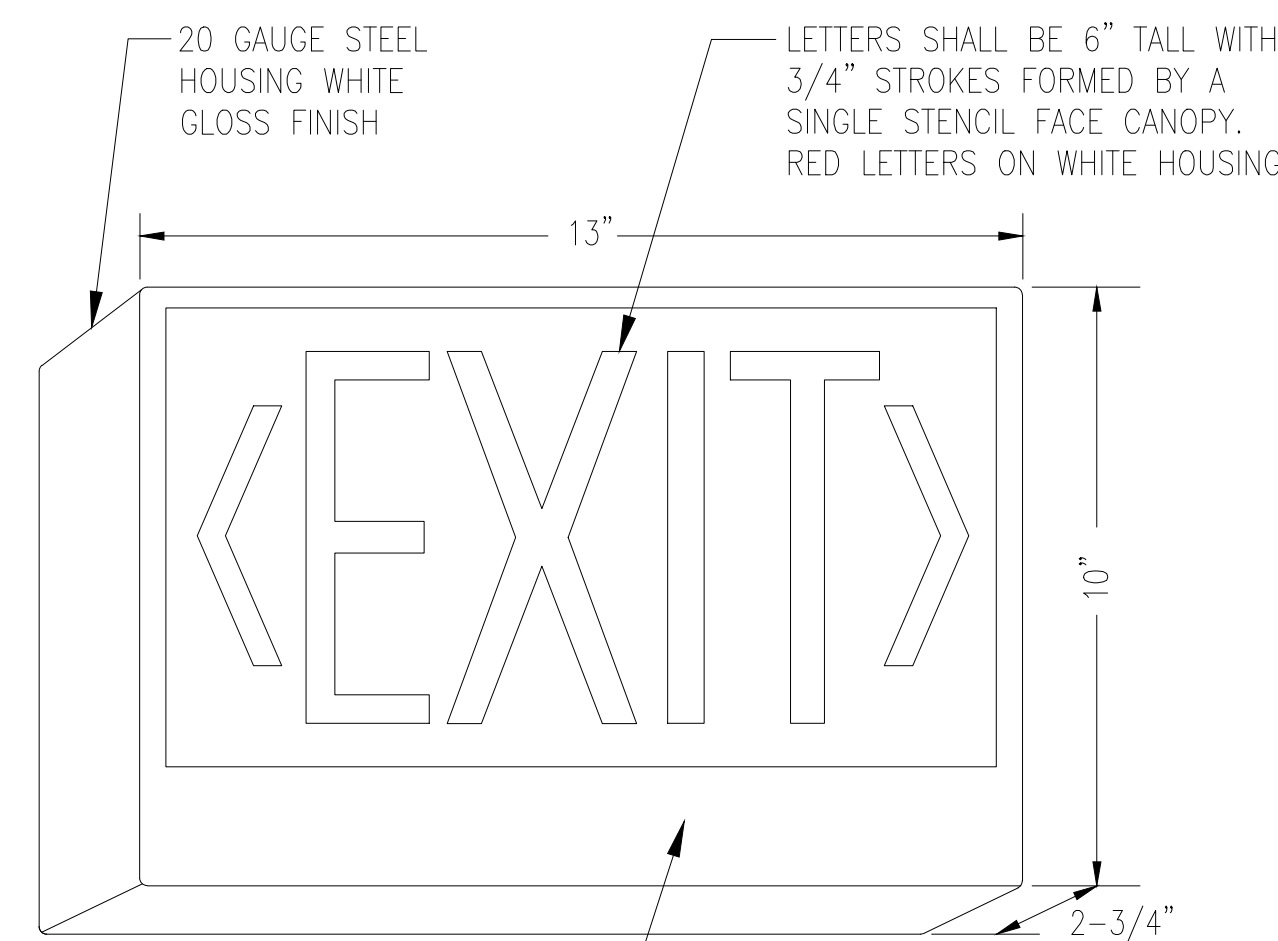
LUMINAIRE TYPE "F" - SIMILAR TO TYPE "E" EXCEPT WITH EMERGENCY BATTERY PACK

LUMINAIRE TYPE "H" - SIMILAR TO TYPE "C" EXCEPT WITH FLANGE FOR GYPSUM BOARD CEILING

LUMINAIRE TYPE "J" - SIMILAR TO TYPE "A" EXCEPT WITH FLANGE FOR GYPSUM BOARD CEILING

LUMINAIRE TYPE "K" - SIMILAR TO TYPE "B" EXCEPT WITH FLANGE FOR GYPSUM BOARD CEILING

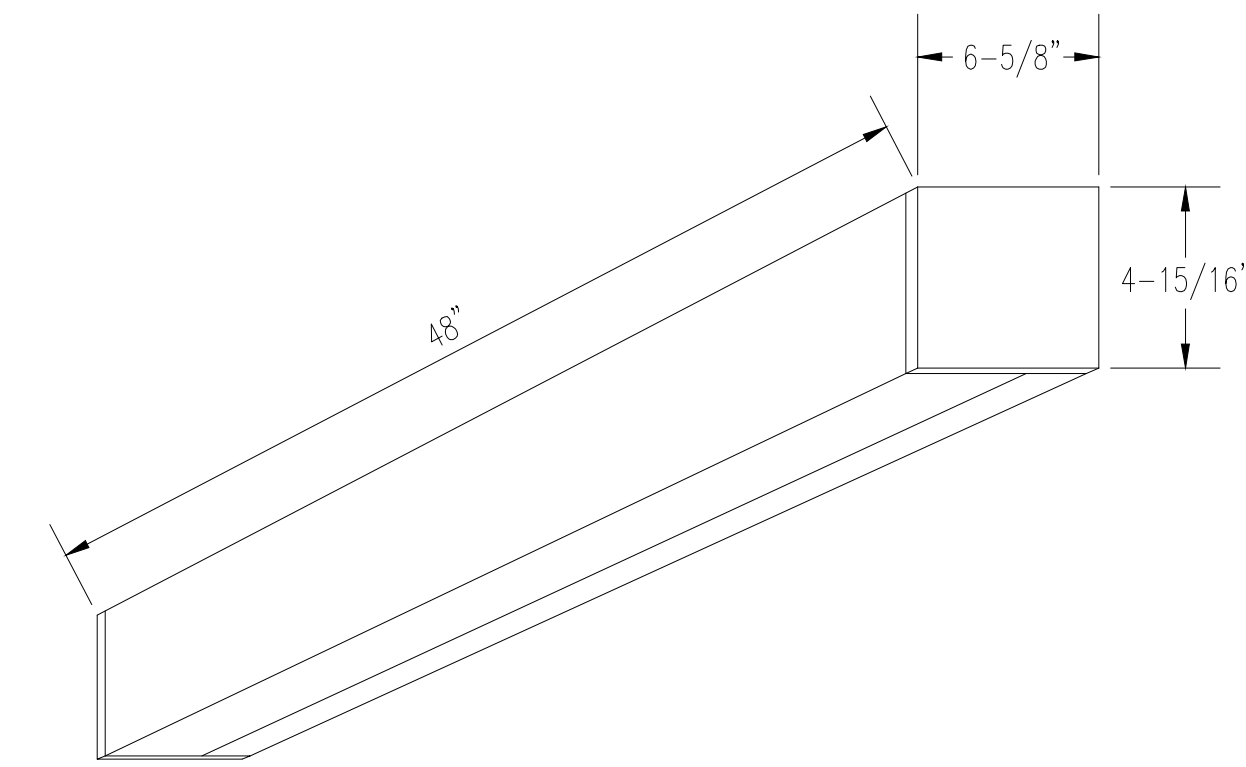
LUMINAIRE TYPE "P" - SIMILAR TO TYPE "E" EXCEPT WITH FLANGE FOR GYPSUM BOARD CEILING



RECHARGEABLE SEALED NICKEL CADMIUM BATTERY PROVIDES LIGHTING A MINIMUM OF 90 MINUTES. TWO-STAGE SOLID STATE REGULATED BATTERY CHARGER

PROVIDE UNIVERSAL MOUNTING BRACKETS AND ACCESSORIES LED LAMPS, 120 VOLTS

LUMINAIRE TYPE "X" - LED



DIECAST ALUMINUM ENDCAPS.

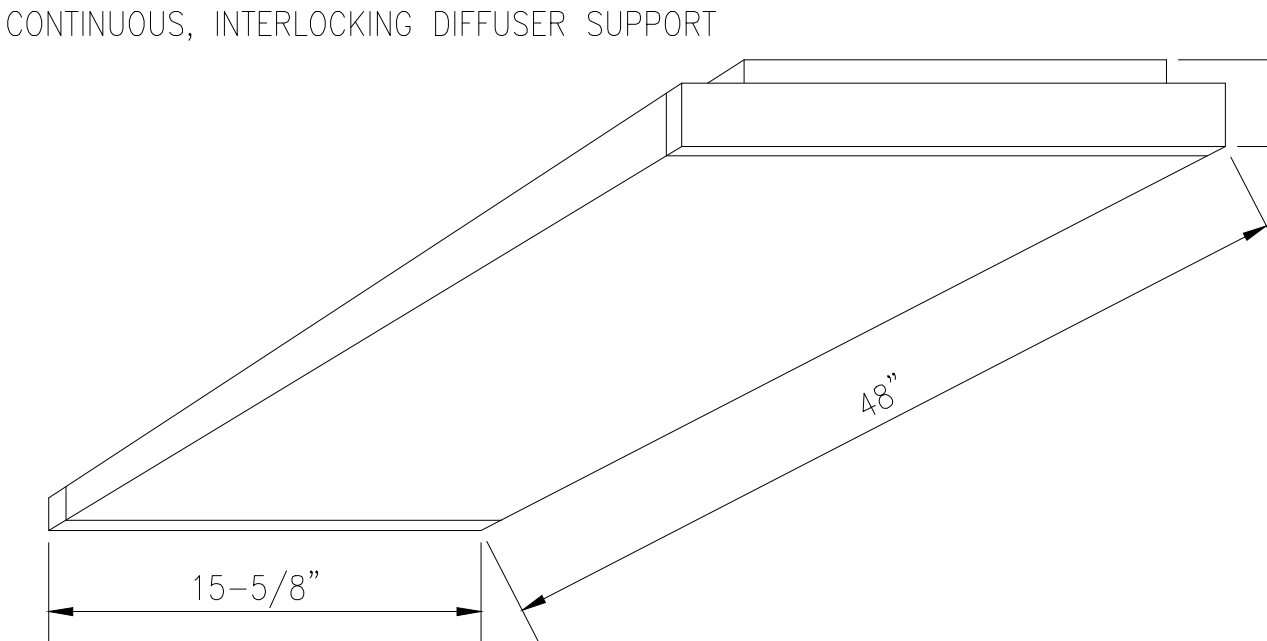
TRANSLUCENT ACRYLIC WRAP-AROUND DIFFUSER.

120V, ELECTRONIC BALLAST. PROVIDE EMERGENCY BATTERY PACK

LUMINAIRE TYPE "G" - 2/48 2-32W FLUORESCENT LAMPS

FLAT-BOTTOM ACRYLIC PRISMATIC DIFFUSER

CONTINUOUS, INTERLOCKING DIFFUSER SUPPORT



120V ELECTRONIC BALLAST

HOUSING DIE-FORMED, HEAVY-GAUGE STEEL

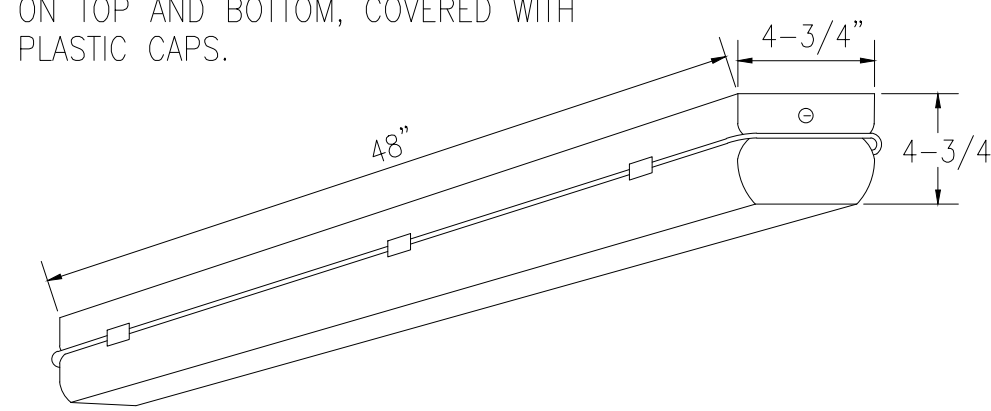
FINISH: 5-STAGE, IRON-PHOSPHATE PRETREATMENT ENSURES SUPERIOR RUST-RESISTANCE CHANNEL FINISHED WITH HIGH-GLOSS, BAKED WHITE ENAMEL

U.L. LISTED

LUMINAIRE TYPE "L" - 2/48 2-32W FLUORESCENT LAMPS

LUMINAIRE TYPE "M" - SIMILAR TO TYPE "L" EXCEPT WITH EMERGENCY BATTERY PACK

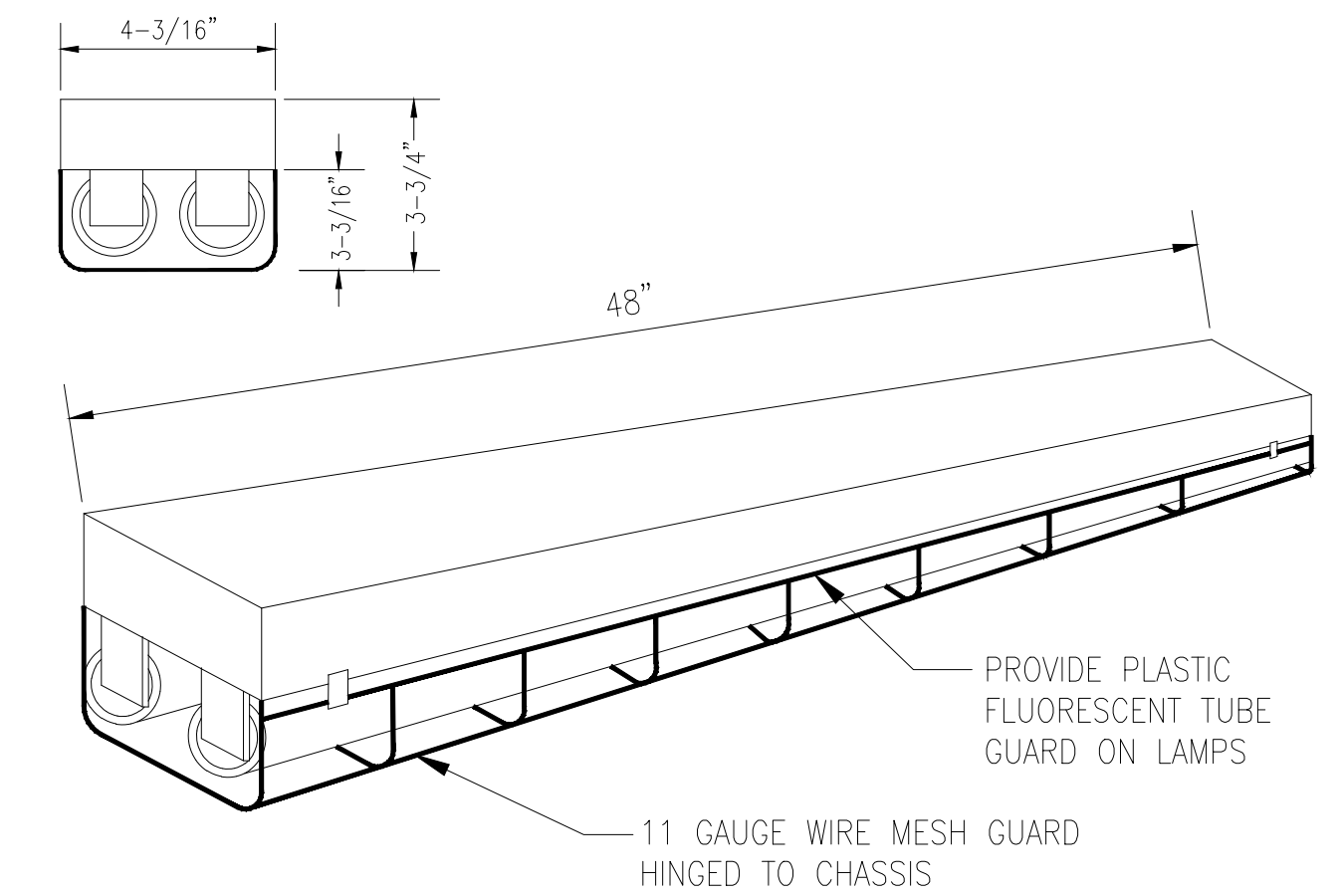
THREADED SEAL FITTINGS PROVIDED ON TOP AND BOTTOM, COVERED WITH PLASTIC CAPS.



HIGH IMPACT, 0.125" CLEAR ACRYLIC ENCLOSURE. ONE PIECE NEOPRENE GASKET. HIGH IMPACT PLASTIC BODY SUITABLE FOR WET LOCATIONS PER NEC. GASKET TO BE 0.125" CONTINUOUS COMPRESSIBLE NEOPRENE. INTERNAL METAL WIRING COMPARTMENT TREATED WITH 5-STAGE ZINC PHOSPHATE AND HOT-BONDED ENAMEL PAINT. REFLECTING SURFACES FINISHED WITH HIGH-REFLECTANCE WHITE ENAMEL. ELECTRONIC BALLAST.

FIXTURE SHALL BE SUITABLE FOR WET LOCATIONS.

LUMINAIRE TYPE "O" - 2/48 2-32W FLUORESCENT LAMPS

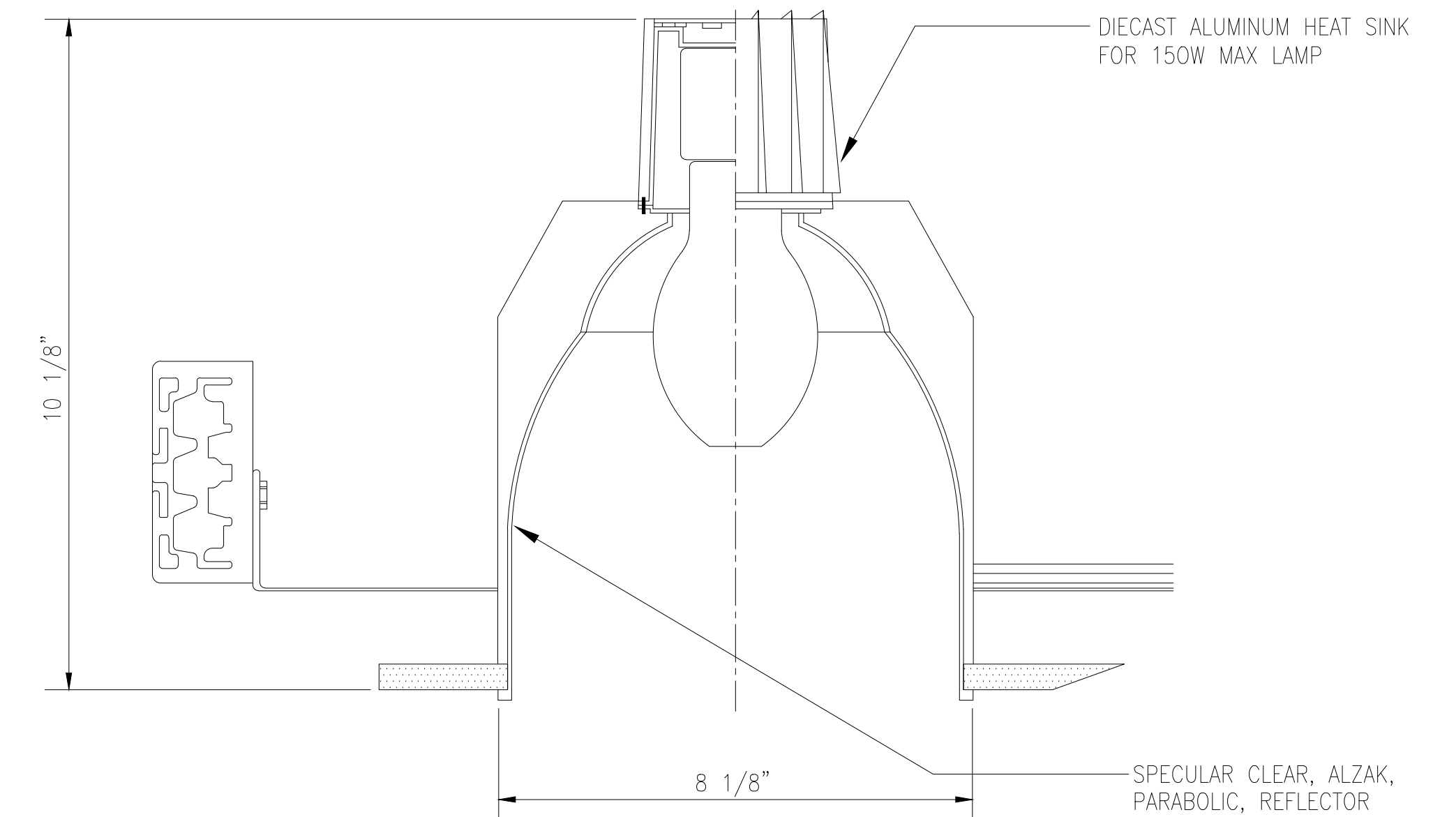


HIGH GLOSS BAKED WHITE ENAMEL FINISH ON 20 GAUGE COLD ROLLED STEEL PHOSPHETIZED AND FIVE STAGE PAINTING

CHASSIS TO BE FABRICATED AND PAINTED AFTER FABRICATION. ALL SURFACES AND EDGES TO BE PAINTED OR GALVANIZED. CHASSIS PREPAINTED PRIOR TO FABRICATION WILL NOT BE ALLOWED

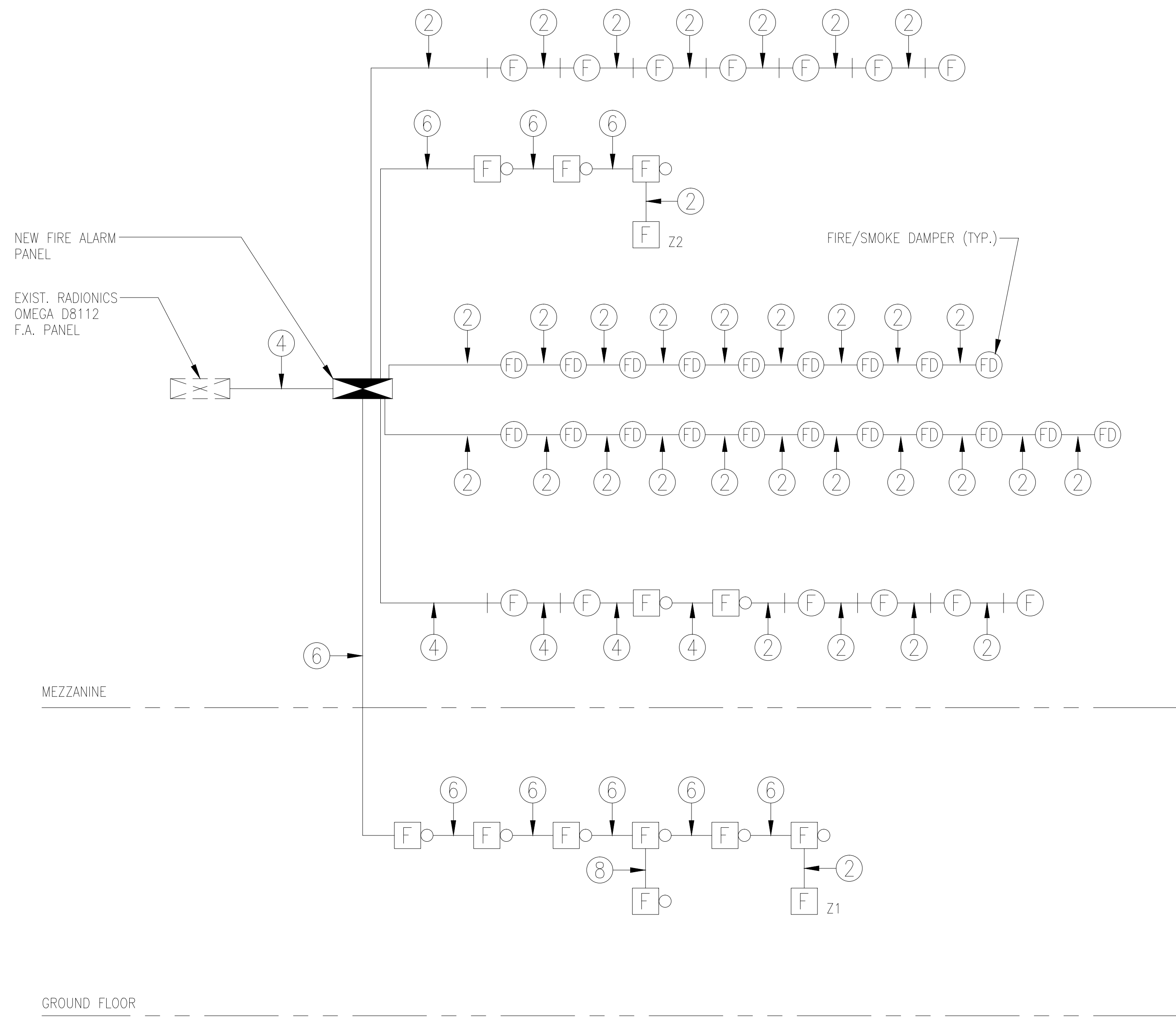
120V, ELECTRONIC BALLAST

LUMINAIRE TYPE "I" - 2/48 2-32W FLUORESCENT LAMPS



LUMINAIRE TYPE "N" - 100W INCANDESCENT LAMP

REVISION NO.	SYMBOL	DESCRIPTION	SHT. OF	DATE
DEPARTMENT OF BUSINESS, ECONOMIC DEVELOPMENT AND TOURISM STATE OF HAWAII PIER 2 WAREHOUSE AND OFFICE IMPROVEMENTS AT FOREIGN TRADE ZONE NO. 9 HONOLULU, OAHU, HAWAII				
LUMINAIRE DETAILS				
DESIGNED BY: JY		CHECKED BY: JY		PROJECT NO.: FTZ001
DRAWN BY: EB		APPROVED BY: JY		DATE: OCT 2003
LICENSE EXPIRATION DATE: APR 30, 2006				SHEET E1.12 OF 67 SHEETS



FIRE ALARM NOTES:

1. CONDUIT SHALL BE 3/4" MINIMUM.
2. WIRE SHALL BE #14 AWG THHN MINIMUM.
3. Z=INITIATING ZONE.
4. NUMBER IN CIRCLE INDICATES NUMBER OF WIRES.
5. ALL EQUIPMENT SHALL BE U.L. LISTED.
6. INSTALLATION SHALL COMPLY WITH NFPA 72.
7. CONTRACTOR SHALL VERIFY EXACT WIRING REQUIREMENTS WITH EQUIPMENT SUPPLIER AND PROVIDE ALL EQUIPMENT AND WIRING FOR A COMPLETE OPERABLE SYSTEM.
8. CONTRACTOR SHALL ENSURE THE EXISTING FIRE ALARM PANEL AND THE NEW FIRE ALARM PANEL ARE "CROSS-TRIPPED", SO THAT AN ALARM ON EITHER PANEL WILL CAUSE THE OTHER PANEL TO GO INTO ALARM.
9. CONTRACTOR SHALL ENSURE ALL FIRE/SMOKE DAMPER CLOSURES ARE ANNUNCIATED AT FIRE ALARM PANEL. COORDINATE ALL WORK WITH MECHANICAL. PROVIDE ADDITIONAL WIRING AS REQUIRED FOR PROPER OPERATION.

FIRE ALARM DIAGRAM

REVISION NO.	SYMBOL	DESCRIPTION	SHT. OF	DATE
		DEPARTMENT OF BUSINESS, ECONOMIC DEVELOPMENT AND TOURISM STATE OF HAWAII PIER 2 WAREHOUSE AND OFFICE IMPROVEMENTS AT FOREIGN TRADE ZONE NO. 9 HONOLULU, OAHU, HAWAII		
		FIRE ALARM RISER DIAGRAM		
		LOU CHAN & ASSOCIATES, INC.	PROJECT NO.: FTZ001	SHEET E1.13
		DESIGNED BY: JY	CHECKED BY: JY	DATE: OCT 2003
		DRAWN BY: EB	APPROVED BY: JY	65 OF 67 SHEETS
		LICENSE EXPIRATION DATE: APR 30, 2006		